

Est 1964

ADCOCK

REFRIGERATION
AIR CONDITIONING

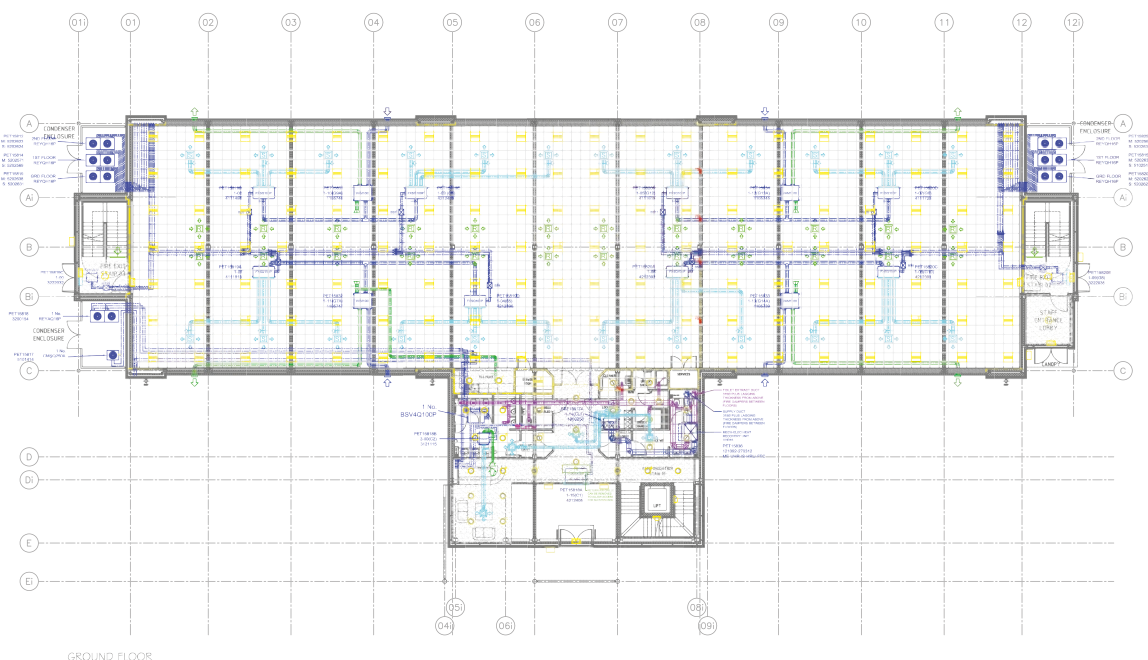
What makes Adcock different?



We're unique in our industry in having invested in our own in-house CAD (Computer Aided Design) department.

What this means for Adcock clients is unrivalled speed and efficiency, whatever the scale and complexity of your project.

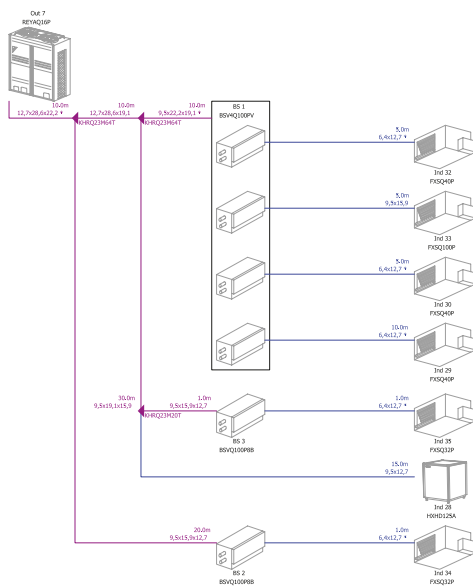
We can turn the broadest of customer ideas and the most specialist of requirements into energy-efficient reality.



We can:

- respond fast to urgent enquiries, issuing you with floor plans showing positions of all equipment to be installed together with our quotations
- prepare working drawings such as floor plans, schematic diagrams and elevations to the tightest of deadlines
- prepare working drawings for buildings for which no drawings are available: our CAD designers draughtsmen and women can survey any property anywhere in the UK
- custom design and produce all necessary signs, stickers and labels – such as, for example, safety signage for building sites, equipment identification labels and rating plates – quickly and efficiently
- supply you with comprehensive handover files (either electronically or as bound hard copies) on completion of our installation. These ensure that the end-user has instant and immediate access to everything they could possibly need or want to know about the system:- scope of works; operating and maintenance instructions; health & safety information; layout drawings showing equipment locations and, where appropriate, system schematic diagrams; refrigerant Fgas records and commissioning documentation.

It's all part of our commitment to delivering first class customer service – together with our unrivalled professional expertise in climate control.

**How our CAD department works**

Our highly skilled draughtsmen and women are based in the dedicated CAD office in Colchester. Working closely with contract managers in the Adcock branches, they create all the drawings (using the latest AutoCAD software), signage and documentation required for each individual project. Close liaison is facilitated by the company's computer network system and the CAD team can print remotely to large-format plotters in all our offices across the country.

The ability to produce working drawings in-house gives us a tremendous efficiency advantage over our competitors on all the installations we do, from the smallest to the largest and most complex.

Phillip Prior MANAGING DIRECTOR

We want you to proceed in whatever way best suits your business.

Please do not hesitate to contact your local Adcock branch if you have any queries or if there is anything at all you would like to discuss.

Birmingham 0121 369 0188 ◦ Bromsgrove 01527 889 494 ◦ Cambridge 01223 812 330
 Chatham 01634 673 870 ◦ Chelmsford 01245 398 780 ◦ Derby 01332 916 230 ◦ Fareham 0118 934 8800
 Guildford 01483 905 120 ◦ Ipswich 01473 242 580 ◦ King's Lynn 01553 692 277 ◦ London 0207 099 7798
 Northampton 01604 748 700 ◦ Norwich 01603 453 300 ◦ Peterborough 01733 344 300 ◦ Reading 0118 934 8800